

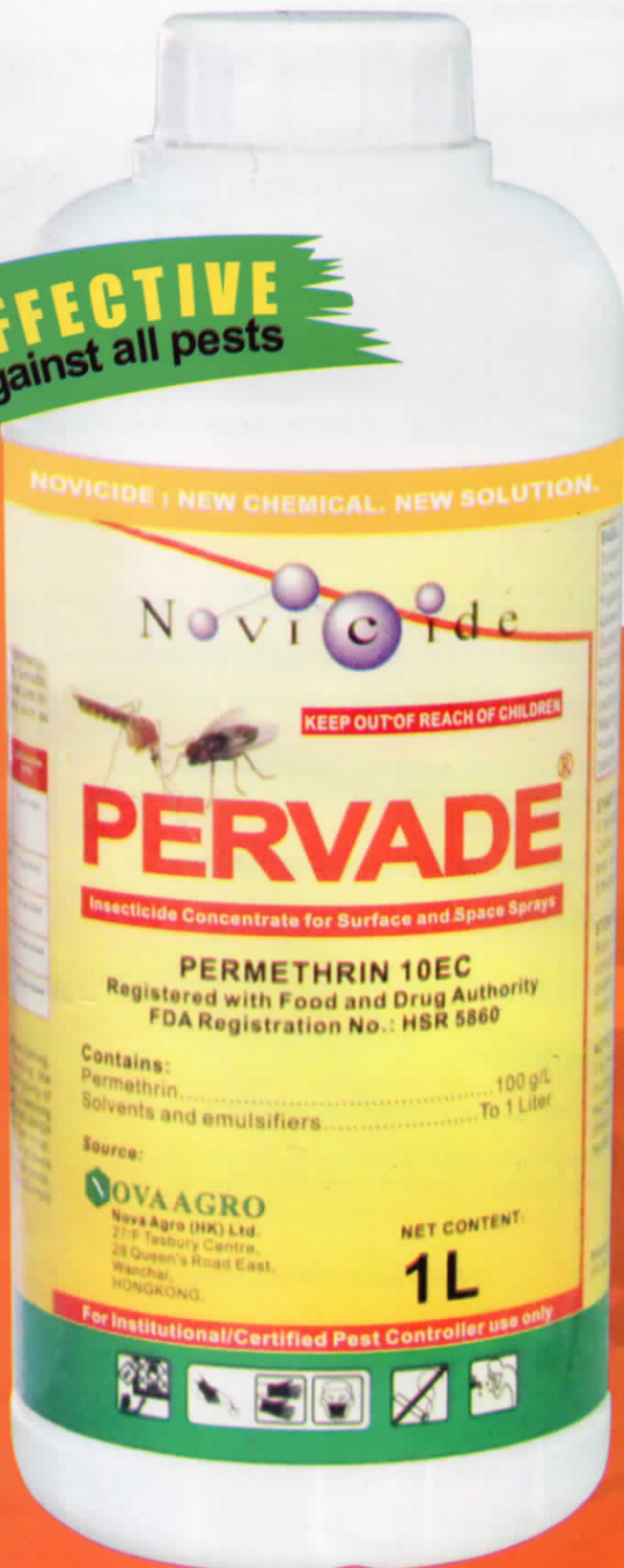
POWER OF PERMETHRIN

Novicide

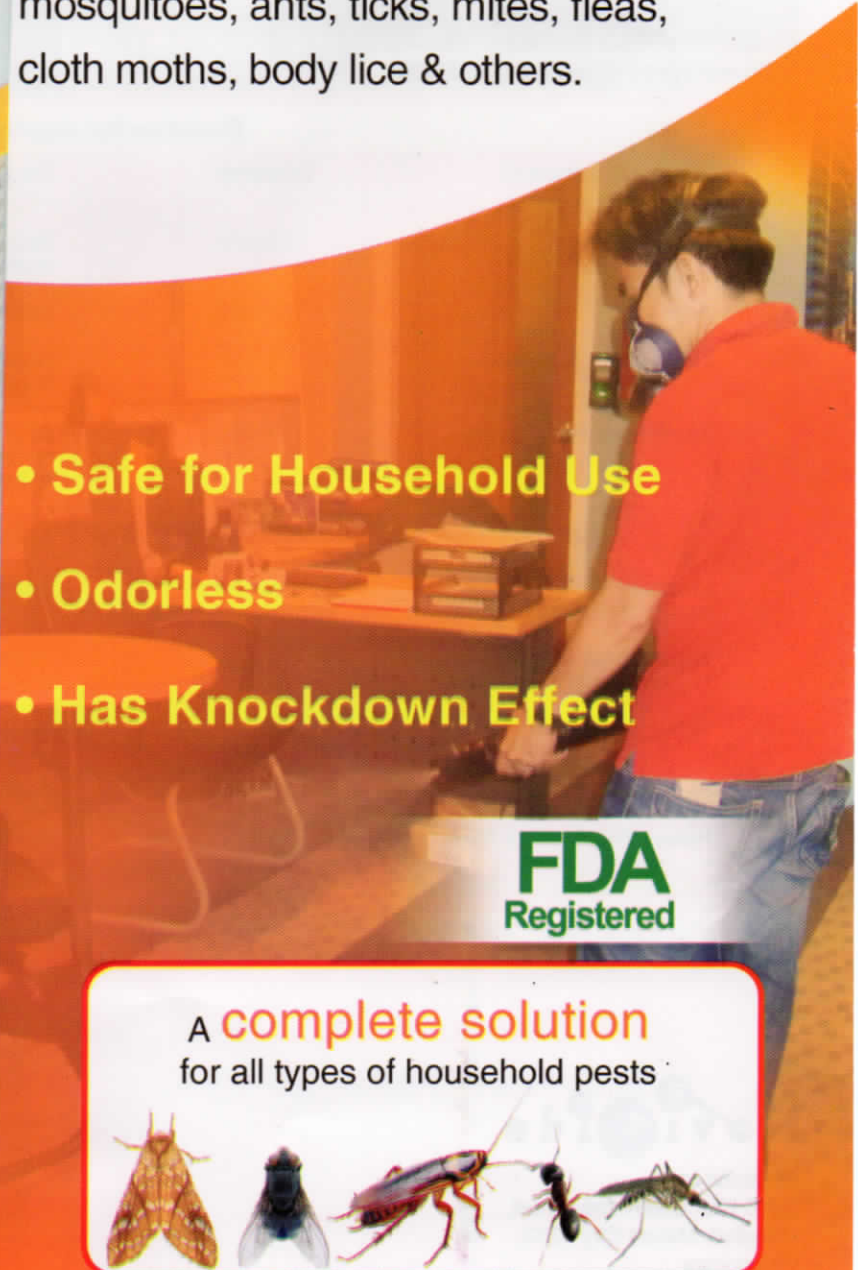
# Pervade<sup>10 EC</sup>

**EFFECTIVE**  
against all pests

Permethrin is one of the **safest insecticides with strong effect against many public/household pests** such as cockroaches, flies, mosquitoes, ants, ticks, mites, fleas, cloth moths, body lice & others.



- Safe for Household Use
- Odorless
- Has Knockdown Effect



**FDA**  
Registered

A **complete solution**  
for all types of household pests



## INFORMATION & DIRECTION

- **PERVADE** is a broad spectrum insecticide for effective control of all household pests such as cockroaches, flies, mosquitoes, ants, mites and ticks etc.
- **PERVADE** is for use in food processing establishments, industrial and commercial premises, homes, hotels, restaurants, offices, hospitals, ships, aircrafts, warehouses, refuse dumps and other establishments.
- **PERVADE** is used both for indoor and outdoor requirements.
- **PERVADE** is for thermal fogging, misting and spraying operations.

## HOW PERVADE WORKS

Permethrin in **PERVADE** is a Type I synthetic pyrethroid and the target site of action is the nervous system. When exposed to **PERVADE**, insects experience hyper excitation & tremors in its nerves, which is eventually followed by convulsions, paralysis and death when lethal dose is reached.



Space spray against mosquitoes



Indoor usage to eliminate pests

### Direction for crawling insects

| Pests / Treatment      | Dilution | Direction   |
|------------------------|----------|---|
| Cockroaches            | 20 ml/L  | Apply on areas of hideouts, along baseboards, walls, cracks, crevices and areas of passage & shelter.                                 |
| Ants                   | 20 ml/L  | Apply directly on ant trails, areas of harborage and colonies.  |
| Fleas Ticks & Mites    | 20 ml/L  | Apply on areas of harborage such as cracks on walls and floors  |
| Stored product beetles | 20 ml/L  | Apply on storage bin, tarpaulins, along the edges of silos, walls of edges of warehouses, cracks on floor and all areas of harborage. |

### Direction for flying insects as space spray using thermal fogging or misting machines

|  |                                       |                                    |
|--|---------------------------------------|------------------------------------|
| Mosquitoes<br>Houseflies & other flies | 20 ml/1 L diesel or kerosene or water | Thermal fogging or misting indoors |
| Mosquitoes<br>Houseflies & other flies | 10 ml/L                               | Thermal fogging outdoors           |

### Direction for mosquito and fly larvae

|                          |         |   |
|--------------------------|---------|---|
| Mosquitoes               | 10 ml/L | Apply in stagnant water pools & breeding sites.   |
| Houseflies & other flies | 10 ml/L | Apply directly on breeding areas such as garbage cans, dump sites, also areas where adult flies rest. |

### Other products from this company



**Novicide**

Novicide Inc  
2410 Hen Belarmino Street,  
Bangkal, Makati City 1233,  
Philippines